

# Digital Application Sheet



|                      |             |
|----------------------|-------------|
| VEHICLE MANUFACTURER | Range Rover |
| MODEL                | Sport       |
| YEAR OF MANUFACTURE  | 2008 on     |
| ENGINE TYPE          | TDV6        |
| TRANSMISSION         | Automatic   |
| VOLTAGE              | 12V         |



## STONERIDGE DIGITAL KIT FOR THIS VEHICLE:

**9800-003 Required for CITO Version Software**

**9800-004 Required for Non-CITO Version Software**

### ADDITIONAL PARTS REQUIRED

|  |  |
|--|--|
|  |  |
|  |  |
|  |  |
|  |  |
|  |  |
|  |  |
|  |  |
|  |  |
|  |  |
|  |  |

### ADDITIONAL VEHICLE MANUFACTURERS PARTS REQUIRED

|  |  |
|--|--|
|  |  |
|  |  |
|  |  |
|  |  |
|  |  |
|  |  |

### FITTING INFORMATION



#### Workshop Technical Support

Tel +44 (0) 1382 866 400 (choose opt.2. opt.1 )  
 Fax +44 (0) 1382 866 401

#### Sales Office

Tel +44 (0) 1382 866 400 (choose opt.1)  
 Fax +44 (0) 1382 866 401



Whilst we have endeavoured to ensure the accuracy of the information supplied, Stoneridge Electronics cannot be held responsible for any errors or omissions. It is the installer's responsibility to ensure compliance with specific vehicle manufacturers repair procedures, especially with regard to the procedure for disconnection/reconnection of the battery. Failure to comply with the vehicle manufacturers instructions may result in personal injury and/or component damage/data loss.

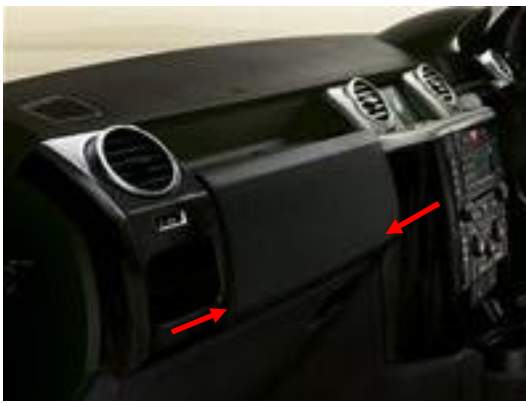
# Digital Application Sheet



1. Remove the fascia around the radio by sharply tugging on the edges indicated.



2. Remove the air vent fascia beside the upper glove box by sharply tugging on the edges indicated.



3. Remove the upper glove box door by sliding out the pins located inside the door.



4. Remove the insert by pulling on the sides ensuring the clips underneath are free.



5. The M1N1 Adaptor must be secured in the gap above the upper glove box shown above.



6. Locate the ABS pump under the left hand cover in the engine bay. Unplug then remove the AMP connector cover.

## Workshop Technical Support

Tel +44 (0) 1382 866 400 (choose opt.2. opt.1)

Fax +44 (0) 1382 866 401

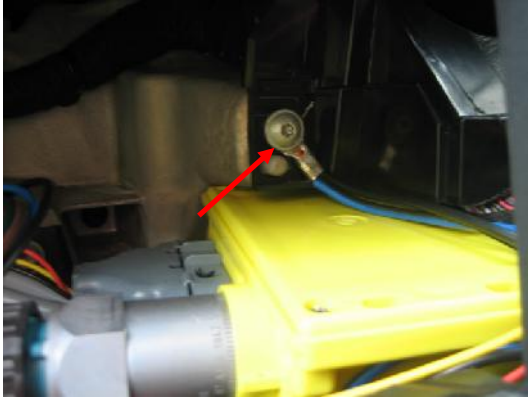
## Sales Office

Tel +44 (0) 1382 866 400 (choose opt.1)

Fax +44 (0) 1382 866 401



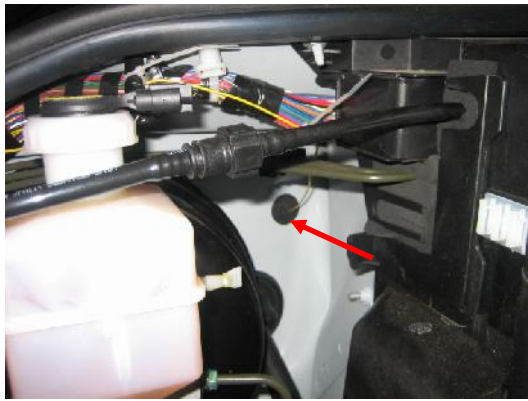
Whilst we have endeavoured to ensure the accuracy of the information supplied, Stoneridge Electronics cannot be held responsible for any errors or omissions. It is the installer's responsibility to ensure compliance with specific vehicle manufacturers repair procedures, especially with regard to the procedure for disconnection/reconnection of the battery. Failure to comply with the vehicle manufacturers instructions may result in personal injury and/or component damage/data loss.



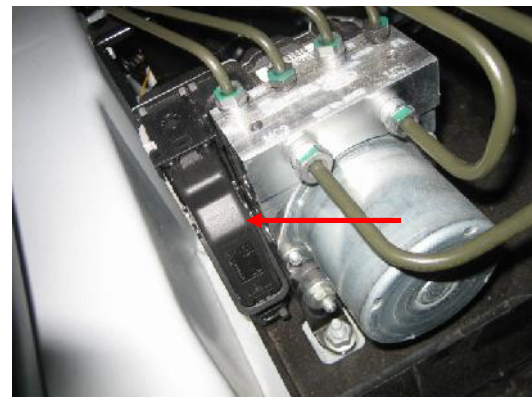
7. Ground A5 & A6 of the tachograph and the Black wire of the M1N1 Adaptor to the chassis using the bolt behind the glove box .



8. Bolt the +12V, A1 of the tachograph and the Red wire of the M1N1 Adaptor, through a 1 amp fuse to the spare battery terminal.



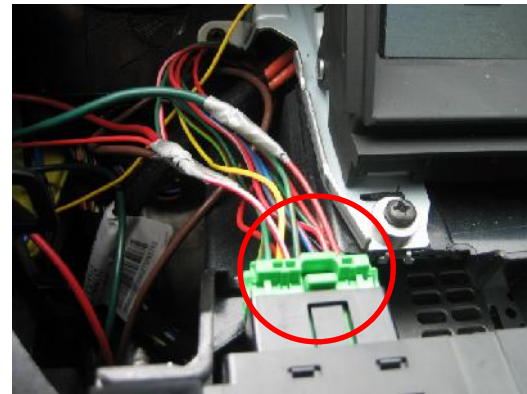
9. Feed the Yellow Signal wire from the M1N1 Adaptor across the inside of the cab and through the blind grommet on the drivers side into engine bay near the ABS pump.



10. Connect the Yellow wire from the M1N1 Adaptor onto the Green wire on Pin 33 of the 46 pin AMP connector. Ensure that the connection is made inside the AMP connector

11. Connect the +12V Ignition, A3 of the tachograph, to the Light Green wire on Pin 2 of the Green Connector which supplies the Hazard Warning Lights Buttons.

12. Connect the Illumination Feed, A2 of the tachograph, to the Red wire with the Brown Stripe on Pin 6 of the Green Connector which supplies the Hazard Warning Lights Buttons.



## Workshop Technical Support

Tel +44 (0) 1382 866 400 (choose opt.2. opt.1 )

Fax +44 (0) 1382 866 401

## Sales Office

Tel +44 (0) 1382 866 400 (choose opt.1)

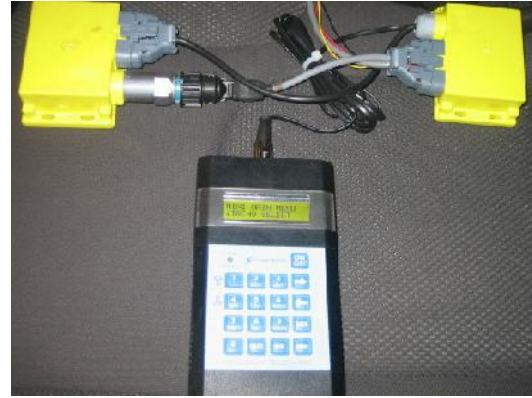
Fax +44 (0) 1382 866 401



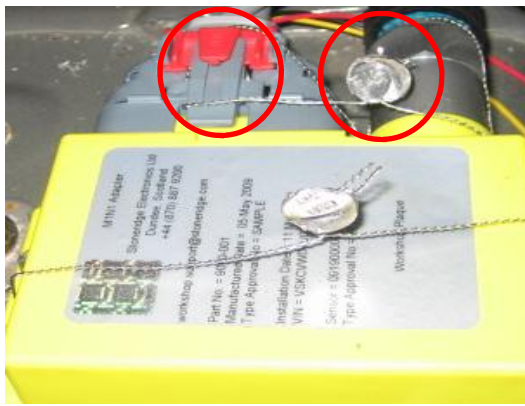
Whilst we have endeavoured to ensure the accuracy of the information supplied, Stoneridge Electronics cannot be held responsible for any errors or omissions. It is the installer's responsibility to ensure compliance with specific vehicle manufacturers repair procedures, especially with regard to the procedure for disconnection/reconnection of the battery. Failure to comply with the vehicle manufacturers instructions may result in personal injury and/or component damage/data loss.



13. The tachograph is secured to the top or bottom of the upper glove box which is drilled for the mounting holes and cables.



14. The M1N1 Adaptor can be calibrated using the M1N1 Programmer. This will not be required as the K Factor is low.



15. Seal the sender and connector through the Red Seal provided to the Adaptor.



16. The Adaptor must be sealed to a non removable part of the vehicle by drilling a hole in the chassis shown.

17. Ensure that the ABS AMP connector is sealed to the ABS Pump through the AMP connector locking clip.

18. Ensure that the Workshop Plaque is filled in on the M1N1 Adaptor with the relevant data.

19. Affix the Tachograph Installation Plaque to a visible area on the vehicle and check that all the relevant data is correct.



## Workshop Technical Support

Tel +44 (0) 1382 866 400 (choose opt.2. opt.1)

Fax +44 (0) 1382 866 401

## Sales Office

Tel +44 (0) 1382 866 400 (choose opt.1)

Fax +44 (0) 1382 866 401



Whilst we have endeavoured to ensure the accuracy of the information supplied, Stoneridge Electronics cannot be held responsible for any errors or omissions. It is the installer's responsibility to ensure compliance with specific vehicle manufacturers repair procedures, especially with regard to the procedure for disconnection/reconnection of the battery. Failure to comply with the vehicle manufacturers instructions may result in personal injury and/or component damage/data loss.



**20.** The 2nd Source of motion is obtained by using the GPS Module and cable harness as shown.

**22.** The GPS Module should be placed in a suitable area within the cab, preferably in an area next to the windscreen.



**21.** The cable harness is connected directly inline with the tachograph power cable when connecting to the tachograph as shown.

## Workshop Technical Support

Tel +44 (0) 1382 866 400 (choose opt.2. opt.1 )

Fax +44 (0) 1382 866 401

## Sales Office

Tel +44 (0) 1382 866 400 (choose opt.1)

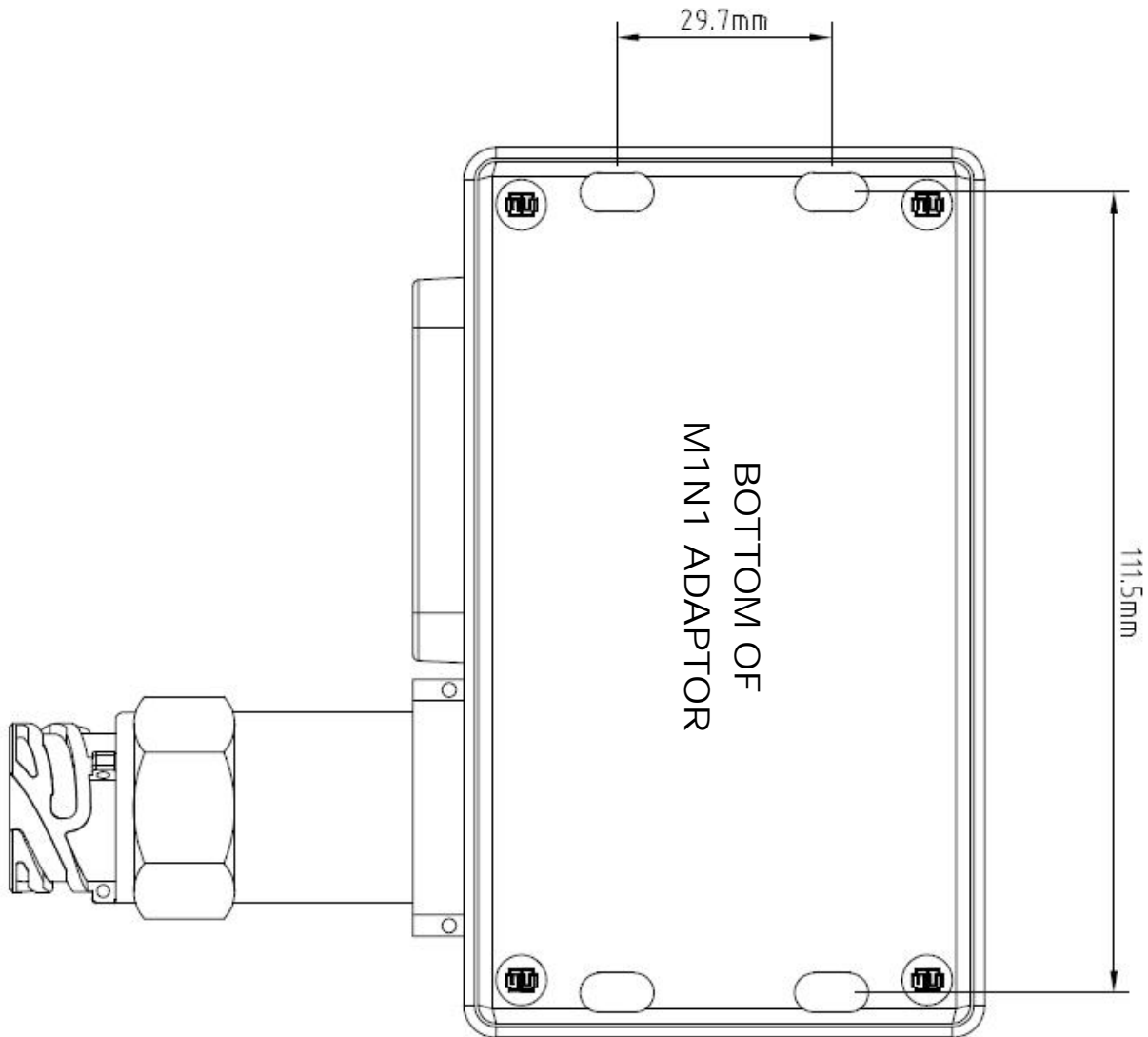
Fax +44 (0) 1382 866 401



Whilst we have endeavoured to ensure the accuracy of the information supplied, Stoneridge Electronics cannot be held responsible for any errors or omissions. It is the installer's responsibility to ensure compliance with specific vehicle manufacturers repair procedures, especially with regard to the procedure for disconnection/reconnection of the battery. Failure to comply with the vehicle manufacturers instructions may result in personal injury and/or component damage/data loss.



## M1N1 Template



### Workshop Technical Support

Tel +44 (0) 1382 866 400 (choose opt.2. opt.1)

Fax +44 (0) 1382 866 401

### Sales Office

Tel +44 (0) 1382 866 400 (choose opt.1)

Fax +44 (0) 1382 866 401



Whilst we have endeavoured to ensure the accuracy of the information supplied, Stoneridge Electronics cannot be held responsible for any errors or omissions. It is the installer's responsibility to ensure compliance with specific vehicle manufacturers repair procedures, especially with regard to the procedure for disconnection/reconnection of the battery. Failure to comply with the vehicle manufacturers instructions may result in personal injury and/or component damage/data loss.